

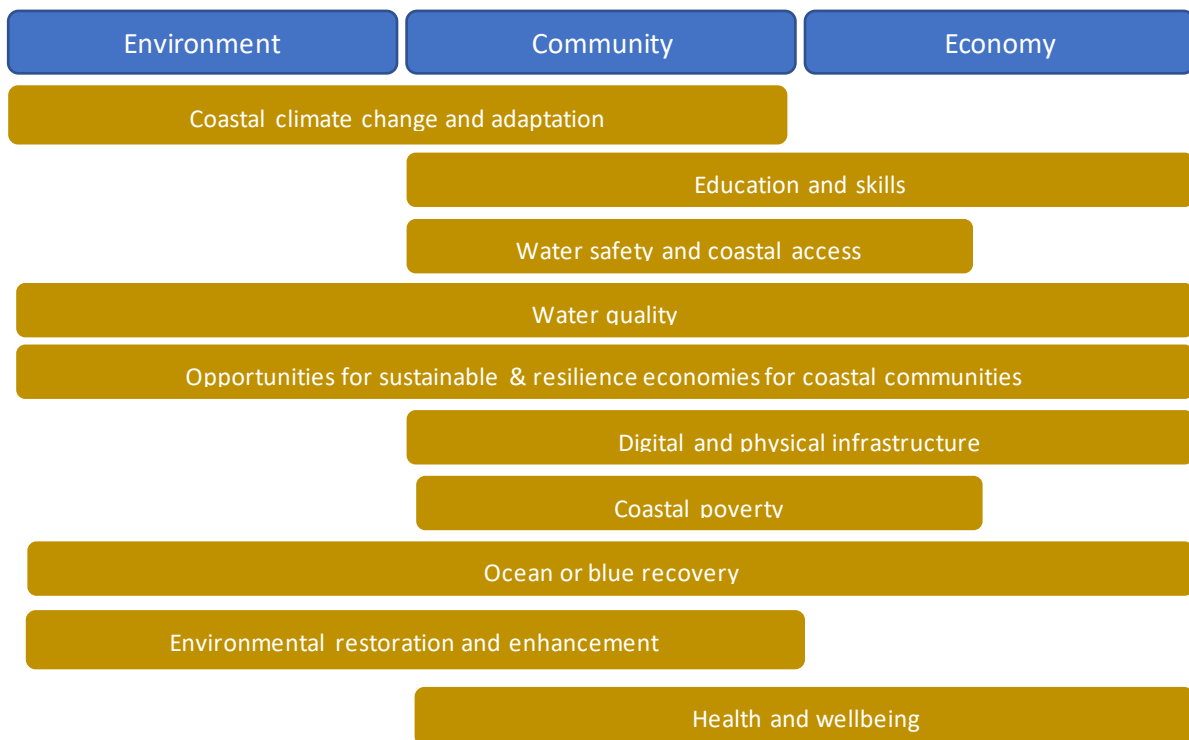


All-Party Parliamentary Group for Coastal Communities

The co-Secretariats of LGA Coastal SIG, Coastal Communities Alliance (CCA) and Coastal Partnerships Network (CPN) envisage a “Coastal Inquiry” to engage Members of Parliament (MPs) with the issues and concerns of coastal communities across the UK. A webpage for the APPG has been developed and can be viewed [here](#)

Themes

Planning for the Coastal Inquiry 2022-23 has taken place through consultation with MPs, councils, governmental agencies and non-governmental organisations through focus sessions, a Meet and Greet event with over 60 organisations, and a survey. Through this the following themes and sub-themes have emerged:



Inquiry structure

The Inquiry will be formed through 4-6 sessions (capacity and resource dependent) and will involve collaboration with other APPGs¹ (some of whom have shown interest in collaborative working) and active engagement with young people within communities. The Inquiry will be formed through the following structure:



¹ Relevant APPGs identified– Ocean, Left-behind neighbourhoods, Fisheries, Water, Climate Change, Environment.

Barriers

- Capacity and resource needed to develop and deliver each session
- Changes in political agendas
- Many issues and constraints on time
- Differing priorities

Opportunities

- Appetite across consultees to have a Coastal Inquiry
- Support being offered for evidence gathering
- Experts and community speakers willing to engage and deliver evidence through sessions
- Interest from other APPGs in collaborative sessions
- Virtual applications allow for increased inclusivity and accessibility
- Coastal Communities APPG has raised enthusiasm with in Officers to run the Inquiry
- Working groups of the LGA Coastal SIG can support development of sessions related to their workplans
- Survey responses have delivered some key contacts to support theme development and delivery of evidence briefs and sessions

Next steps

- Review themes and subthemes with APPG Chair to determine priority sessions for 22/23
- Review capacity and resource for each identified theme
- Prepare and develop evidence briefings through calls for evidence to contacts and through OneCoast
- Approach and confirm expert and community voices to relay their experiences
- Evidence to support the pre-session briefings
- Support from Officers in the development of these briefings
- Member voices to discuss how these issues are affecting their communities
- Any relevant contacts who would be able to support the inquiry