



All Party Parliamentary Group for Coastal Communities

Annual General Meeting (AGM)

10 March 2022 10:00-11:00

Held online via Zoom

Minutes of the AGM

1. In attendance

Sally-Ann Hart MP (Chair)

Giles Watling MP

Peter Aldous MP

Alicia Kearns MP

Ben Everitt MP

Chris Clarkson MP

Tim Loughton MP

Robin Millar MP

Beth Davies representing Virginia Crosbie MP

Secretariat: Beccy MacDonald-Lofts, Emily Cunningham, Amy Pryor, Nicola Radford

2. Election of officers

The following officers were elected for the 2022 parliament:

Sally-Ann Hart MO (Chair)
Rosie Duffield MP (Vice chair)
Virginia Crosbie MP (Vice chair)
Peter Aldous MP (Vice chair)
Tim Loughton MP (Vice chair)
Selanie Saxby MP (Vice chair)
Robin Millar MP (Vice chair)
David Dugoid MP (Vice chair)
Jim Shannon MP (Vice chair)

3. Coastal Inquiry update

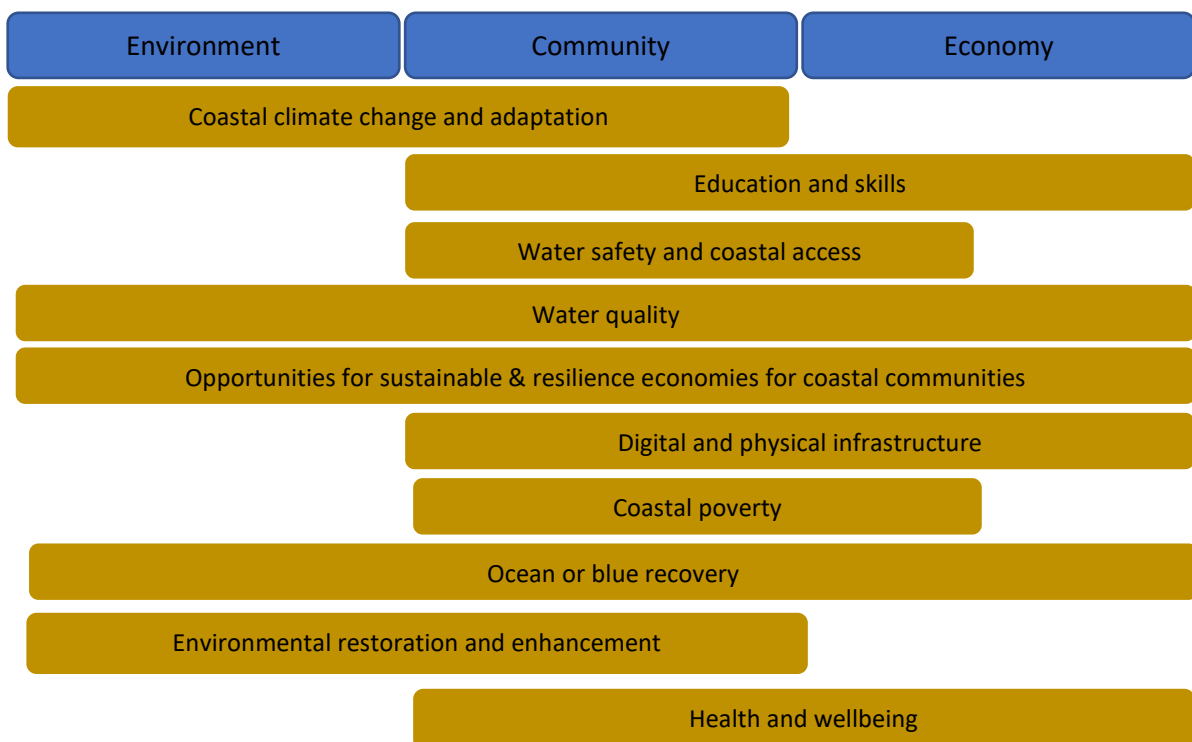
Attendees were provided with an update on the Coastal Inquiry research work undertaken by the co-Secretariat as part of the Coastal Partnerships Network Championing Coastal Coordination work (summary document attached to the minutes).

All-Party Parliamentary Group for Coastal Communities

The co-Secretariats of LGA Coastal SIG, Coastal Communities Alliance (CCA) and Coastal Partnerships Network (CPN) envisage a “Coastal Inquiry” to engage Members of Parliament (MPs) with the issues and concerns of coastal communities across the UK. A webpage for the APPG has been developed and can be viewed [here](#).

Themes

Planning for the Coastal Inquiry 2022-23 has taken place through consultation with MPs, councils, governmental agencies and non-governmental organisations through focus sessions, a Meet and Greet event with over 70 organisations, and a survey. Through this the following themes and sub-themes have emerged:



Inquiry structure

The Inquiry will be formed through 4-6 sessions (capacity and resource dependent) and will involve collaboration with other APPGs¹ (some of whom have shown interest in collaborative working) and active engagement with young people within communities. The Inquiry will be formed through the following structure:



¹ Relevant APPGs identified– Ocean, Left-behind neighbourhoods, Fisheries, Water, Climate Change, Environment.



Barriers

- Capacity and resource needed to develop and deliver each session
- Changes in political agendas
- Many issues and constraints on time
- Differing priorities

Opportunities

- Appetite across consultees to have a Coastal Inquiry
- Support being offered for evidence gathering
- Experts and community speakers willing to engage and deliver evidence through sessions
- Interest from other APPGs in collaborative sessions
- Virtual applications allow for increased inclusivity and accessibility
- Coastal Communities APPG has raised enthusiasm within Officers to run the Inquiry
- Working groups of the LGA Coastal SIG can support development of sessions related to their work plans
- Survey responses have delivered some key contacts to support theme development and delivery of evidence briefs and sessions

Next steps

- Review themes and subthemes with APPG Chair to determine priority sessions for 22/23
- Review capacity and resource for each identified theme
- Prepare and develop evidence briefings through calls for evidence to contacts and through OneCoast
- Approach and confirm expert and community voices to relay their experiences
- Evidence to support the pre-session briefings
- Support from Officers in the development of these briefings
- Member voices to discuss how these issues are affecting their communities
- Any relevant contacts who would be able to support the inquiry